

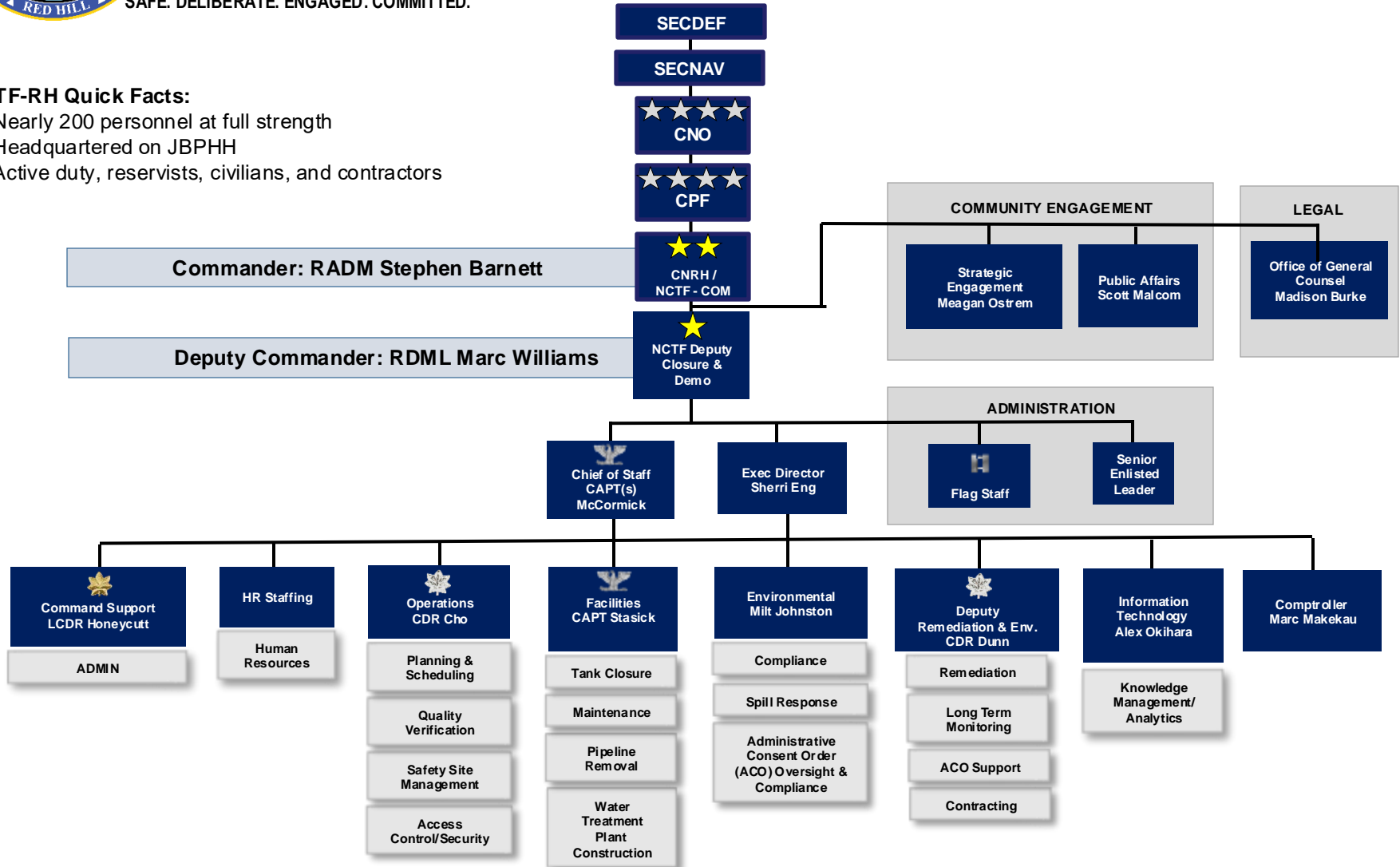


NCTF-RH Organizational Structure

SAFE. DELIBERATE. ENGAGED. COMMITTED.

NCTF-RH Quick Facts:

- Nearly 200 personnel at full strength
- Headquartered on JBPHH
- Active duty, reservists, civilians, and contractors

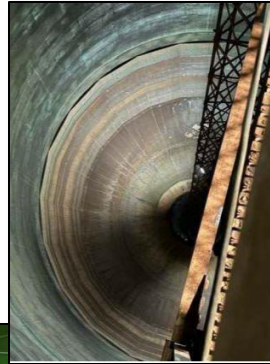




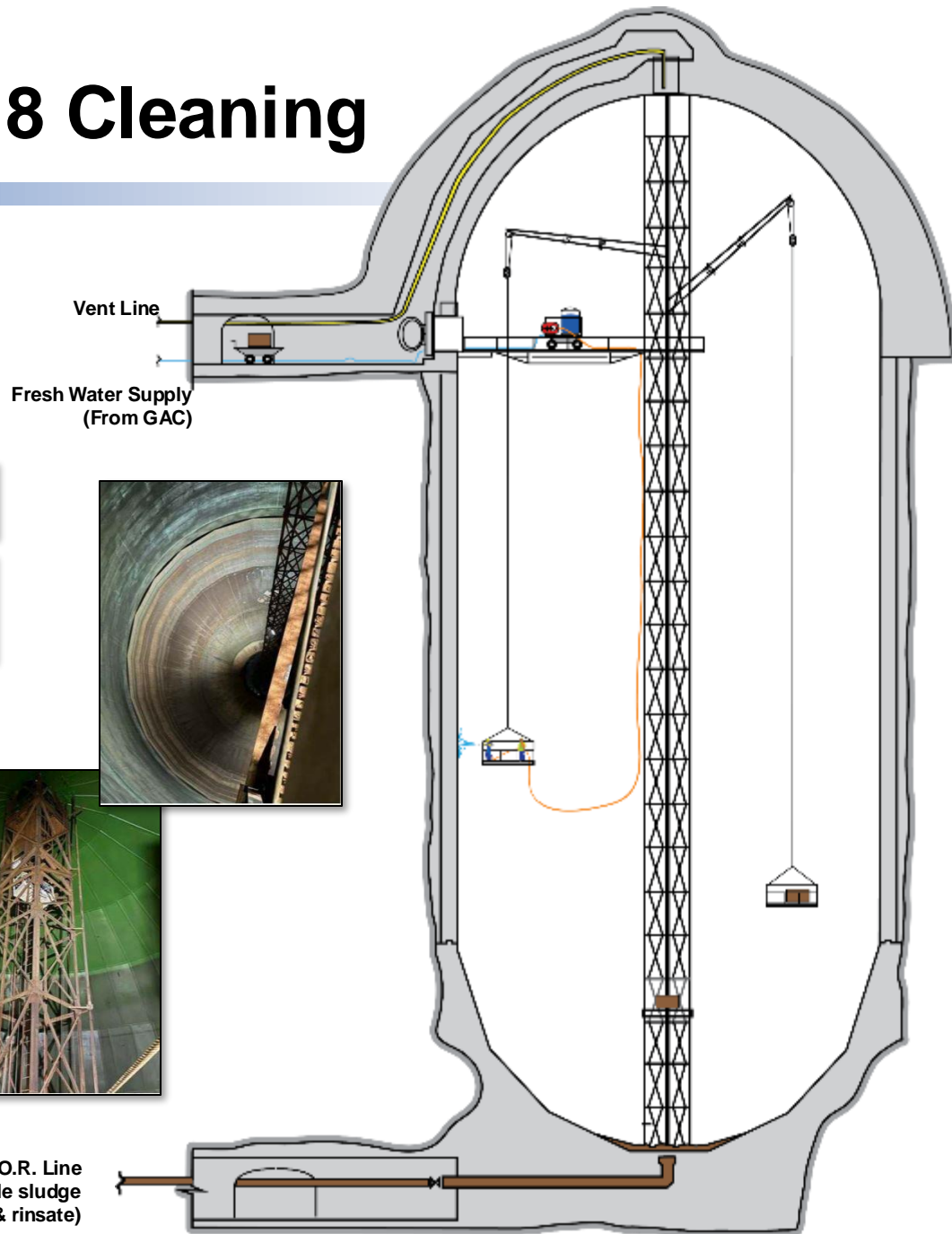
SAFE. DELIBERATE. ENGAGED. COMMITTED.

Tank 7 and 8 Cleaning

- ✓ **Step 1 Preparation (Approximately 2-3 Months) – COMPLETE!**
- ❑ **Step 2 Install Cleaning Infrastructure/Remove Solid Sludge (Approximately 2-3 Months) – UNDERWAY!**
- ❑ **Step 3 Pressure Washing (Approximately 1-2 Months) – BEGINNING IN AUGUST!**
- ❑ **Step 4 Tank Decommission (Approximately 1-2 Months) – TANK IS INSPECTED AND VERIFIED CLEAN!**



F.O.R. Line
(flowable sludge
& rinsate)



Navy will
continue to
ensure safe
removal and
disposal of
rinsate

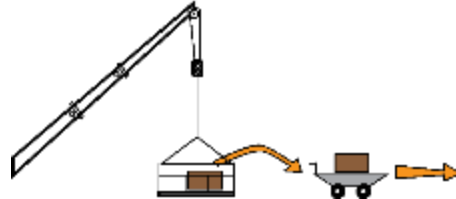


SAFE. DELIBERATE. ENGAGED. COMMITTED.

Sludge Waste Disposal



Sludge is placed into 55-gallon drums that are then sealed.



Solid Waste
Accumulation
Area



The 55-gallon drums are loaded onto a truck, taken to port, then loaded on a ship.



Analysis determines disposal.

Navy will continue to ensure safe removal and disposal of sludge

check out our samples



Sludge is shoveled into 5-gallon buckets.



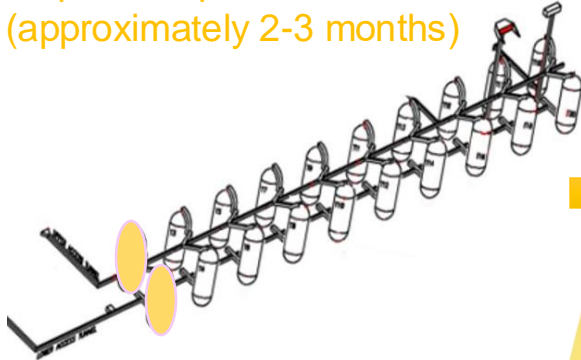
Samples taken for analysis.



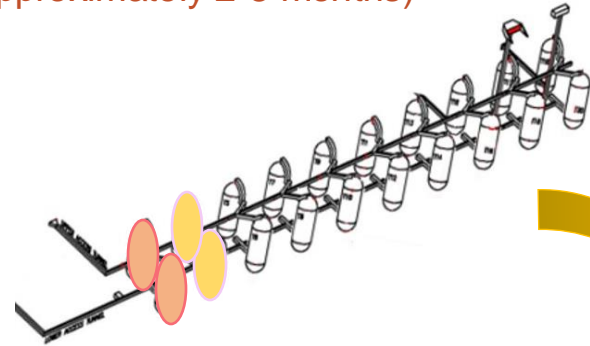
SAFE. DELIBERATE. ENGAGED. COMMITTED.

Tank Cleaning Progression

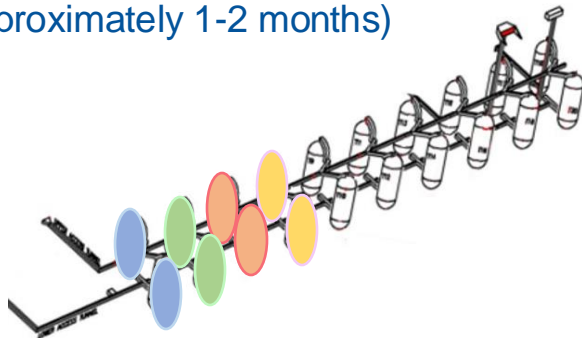
- Step 1: Preparation (approximately 2-3 months)



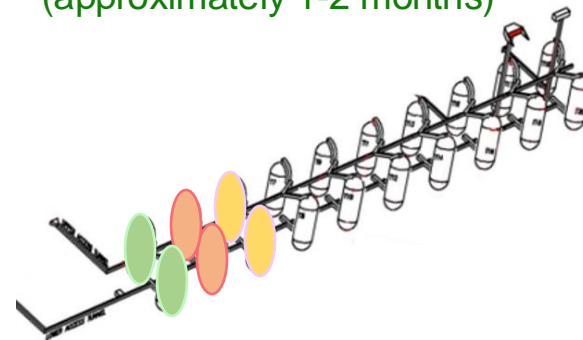
- Next set begin Step 1
- Step 2: first set - install cleaning infrastructure (approximately 2-3 months)



- Next set begin step 1
- Third set begin step 2
- Second set begin step 3
- Step 4: first set – tank decommission (approximately 1-2 months)



- Next set begin step 1
- Second set begin step 2
- Step 3: first set – pressure washing (approximately 1-2 months)



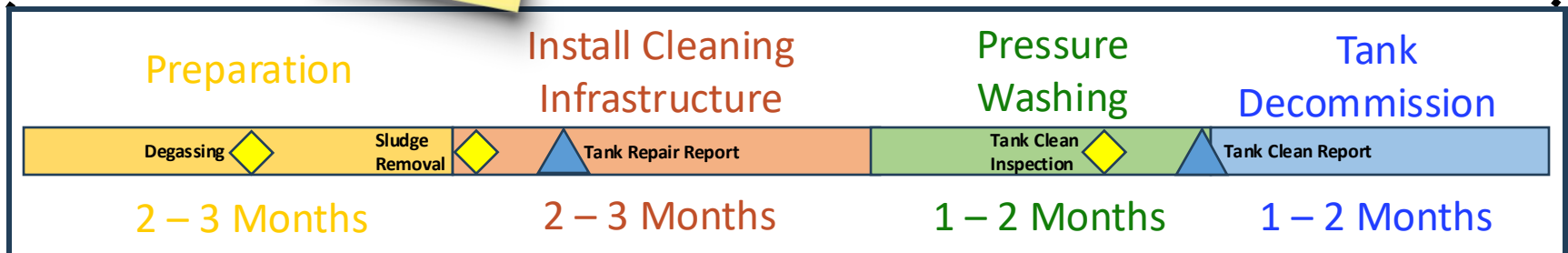
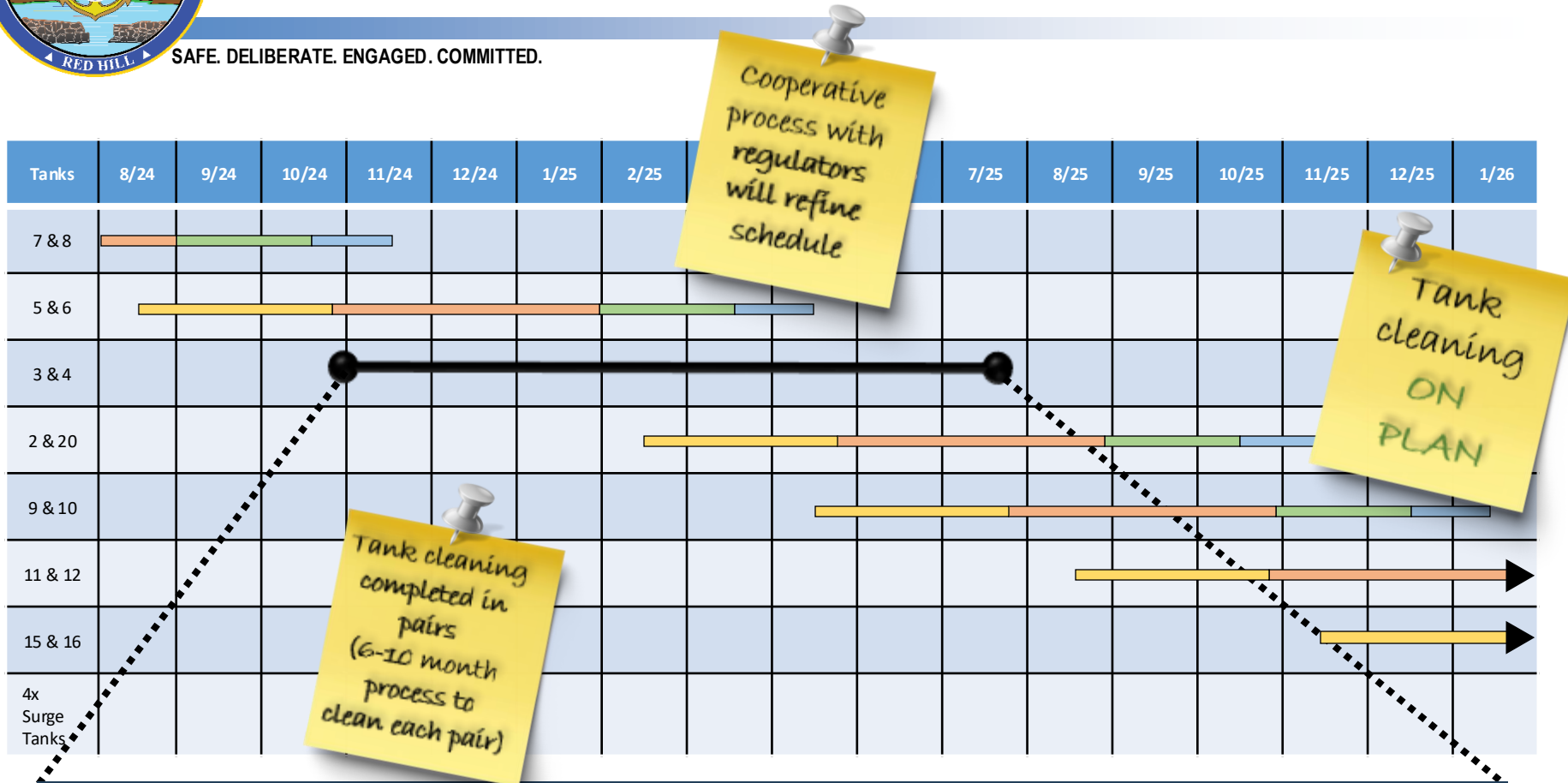
cleaning
at the
speed of
safety

Notional Diagram Layout – Not reflective of actual tank order



SAFE. DELIBERATE. ENGAGED. COMMITTED.

Tank Cleaning Timeline



◆ Milestone

▲ Deliverables to Regulators



NCTF-RH Progress Report

SAFE. DELIBERATE. ENGAGED. COMMITTED.

- JUL 25, 2024 - Tank 7/8 Structural repairs started
- JUL 11, 2024 - Tank 7/8 Structural assessment started
- JUL 8, 2024 - Tank 7 Sludge removal begins
- JUN 28, 2024 - Tank 8 Sludge removal begins
- JUN 6, 2024 - Tank 7 Water injection
- MAY 30, 2024 - Tank 8 ventilation begins
- APR 23, 2024 - Tank 8 Water injection
- APR 8 - 28, 2024 - AFFF removal
- APR 1, 2024 - Air Quality Monitoring program begins
- MAR 28, 2024 - Transfer of Authority JTF-RH to NCTF-RH
- FEB 22, 2024 - Tank Cleaning Spill Drill
- JAN 18, 2024 - Plank Owners ceremony
- DEC 15, 2023 - 104,642,160 gal of fuel removed JTF-RH
- NOV 6, 2023 - SECDEF approves formation of NCTF-RH



Safe and deliberate operations

Committed to community engagement

- Governor's Water Committee meeting - AUG 15, 2024
- Red Hill Remediation Roundtable meeting - JUL 11, 2024
- Honolulu Local Emergency Planning Committee meeting - JUN 18, 2024
- Society of American Military Engineers meeting - 12 JUN, 2024
- Navy League Honolulu Council meeting - 12 JUN, 2024
- Military Affairs Council meeting - JUN 7, 2024
- Koolaupoko Native Hawaiian Civic Club meeting - JUN 4, 2024
- Waimanalo Moku Kupuna Council meeting - MAY 24, 2024
- Navy League Honolulu Council meeting - MAY 14, 2024
- Navy Information Sharing Forum meeting - MAY 9, 2024
- Commission on Water - APR 16, 2024 Resource Management meeting
- House Special - APR 10, 2024 Committee on Red Hill meeting
- Hawaii State - MAR 15, 2023 Emergency Response Commission meeting
- FTAC - MAR 7, 2023 Fuel Tank Advisory Committee meeting



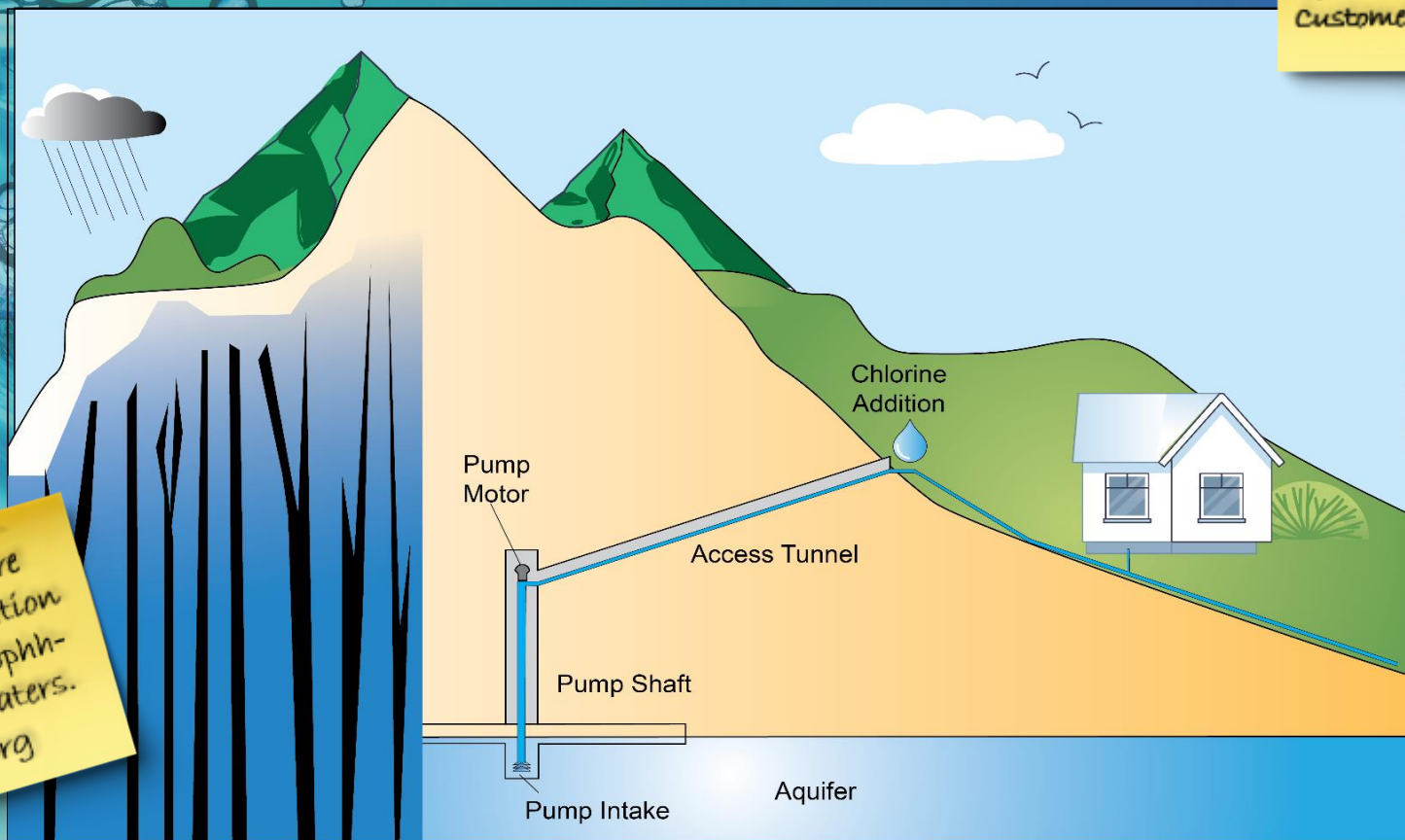
Joint Base Pearl Harbor Hickam Drinking Water Quality Monitoring

SAFE. DELIBERATE. ENGAGED. COMMITTED.

Where does my water come from?

Joint Base Pearl Harbor-Hickam's drinking water is supplied solely from Waiawa shaft, a source over **6 miles** away from Red Hill. The water is chlorinated before it enters the distribution system to serve

93,000
Customers



For more
information
www.jbphh-safewaters.org

Scan the QR Code
to visit our website





Joint Base Pearl Harbor Hickam Drinking Water Quality Monitoring

SAFE. DELIBERATE. ENGAGED. COMMITTED.

For more
information
www.jbphh-safewaters.org

How is drinking water tested?

Routine Compliance



Drinking water is sampled per applicable regulations.



Varies by substance – monthly, annually, or longer

Extended Drinking Water Monitoring



Water samples are proactively collected to test for 46 parameters.



2-3 weeks

Water Quality Action Team (WQAT)

Testing



Water samples are collected in response to resident calls.



2-3 weeks
(TPH screening 24 hrs.)

Community Liaison



A liaison provides information and answers questions.



Shares results with resident through email and/ or phone.

Water Quality Investigator



Experts evaluate water quality and investigate premise plumbing.



Investigators conduct inspections, share recommendations and notify housing for any maintenance/ repairs.

What are the water quality monitoring results so far?

Extended Drinking Water Monitoring



Goal of 100% | of homes tested by 2025



~110 | samples tested per week



~46 | total parameters tested

Extensive | testing across all neighborhoods

11,500
as of
today!

11,500
samples
have been
collected
so far

No JP-5
detected

The JBPHH
system
continues to
meet all safe
drinking water
standards.



To request home water
sampling contact:
808-210-6968

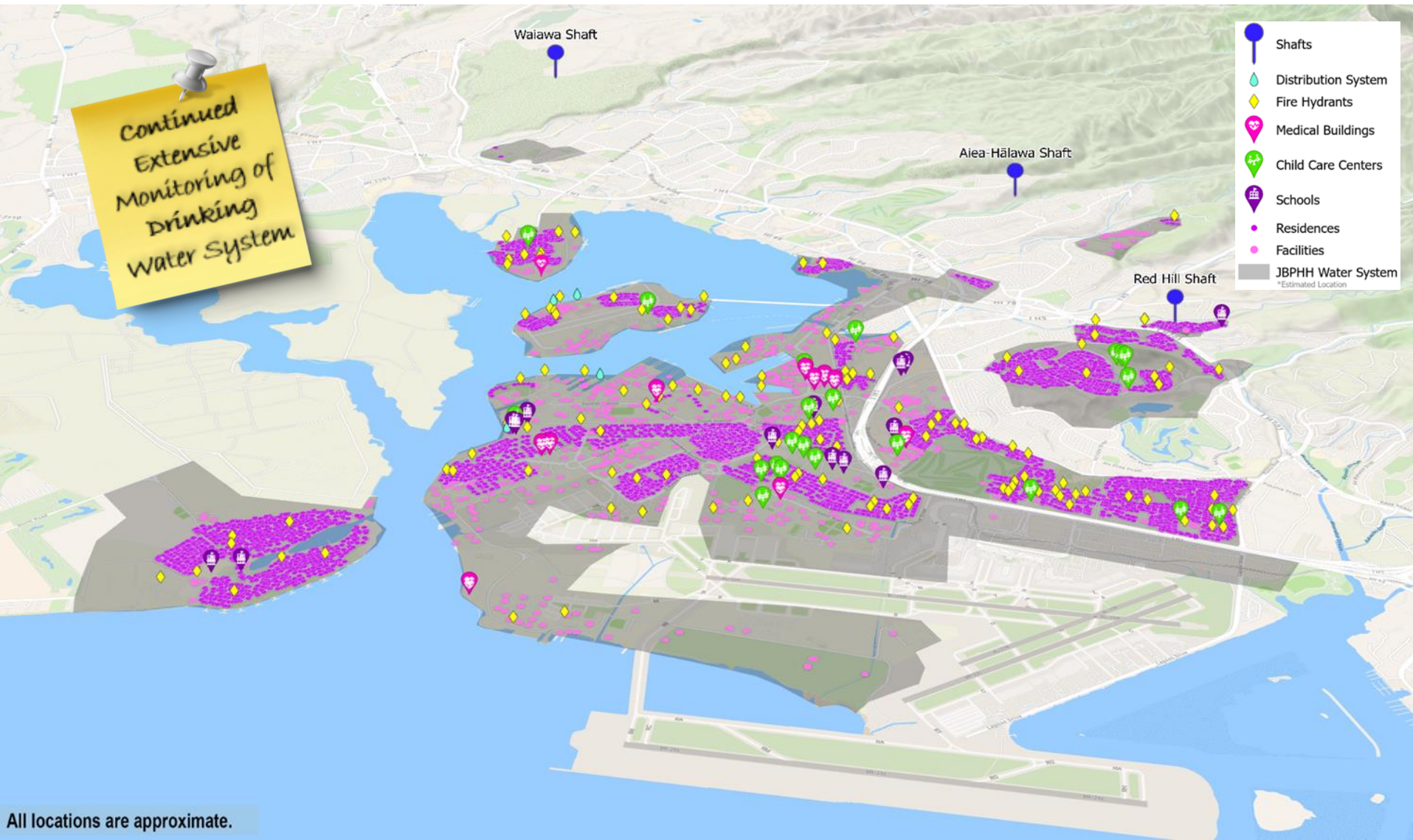
See water sampling
results at:
<https://jbphh-safewaters.org>





Joint Base Pearl Harbor Hickam Drinking Water Quality Monitoring

SAFE. DELIBERATE. ENGAGED. COMMITTED.



All locations are approximate.

Let us
know where
you're
from!

Honolulu
hawaii

